



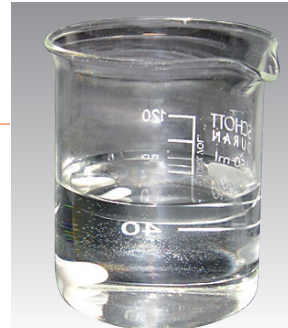
100% ITALIAN
100% QUALITY

POTASSIUM METABISULFITE

Competitor's PMS
20% w/v solution.



Winy - Enartis K-Met
produced by Essecò
20% w/v solution



WOULD YOU BE CONFIDENT IN TREATING YOUR WINE OR YOUR MUST WITH JUST ANY METABISULFITE BASED ON A LOWER COST?

If the answer is yes, know that you could use a product outside the law. In the specific case of the solutions pictured above, the iron content is almost double the limits set by the Codex CEnologique International and the Food Chemical Codex.

! K-MET PRODUCTS ARE NOT ALL THE SAME

More and more frequently, in the market you will find there are potassium metabisulfites which are proposed with an attractive price but the quality is unfit for human consumption.

! YOU GET WHAT YOU PAY FOR

Producing in accordance with the regulations, ensuring a high and consistence quality requires a continuous monitoring of the production and implies higher costs. Often the competitive price is synonymous with a poor quality, obtained without respecting the environment and the health of operators and consumers.

! THE IMPORTANCE OF PACKAGING

Even the packaging has its importance! A good package must ensure the integrity of the product even for long storage and must conform to food grade standards.

Often potassium metabisulfite is packed in polythene (PE) bags. This material has a high permeability to oxygen and steam. When PE is used, the risk of having "rocky" k-met, oxidation and loss of sulphur dioxide is high.

Black PE is not permitted as a primary package for food and food additives.



Winy (K-Met) guarantees

- Quality suitable for food.
- Purity and content of sulphur dioxide exceeding the parameters established by regulations.
- Consistent quality in every batch of production.
- Packaging conforming to food standards and ensuring the product will stay intact with **multi-layered aluminium** to maintain total impermeability to gases, high mechanical strength and lasting readability of the label. Result: does not oxidize and... does not stink!
- 100% of Italian origin.

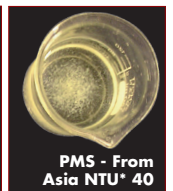
HOW TO CHECK THE QUALITY OF POTASSIUM METABISULFITE

The visual quality of a simple 20% solution of potassium metabisulfite may already give many the information about the product that they have purchased.

For example:

- A yellow color of the solution indicates a high content of metals such as iron and magnesium.
- The presence of turbid indicates a state of strong oxidation of the product and by consequence a low title in SO₂ and the presence of high quantity of sulphate.

WINY - Enartis
NTU* < 1



PMS - From
Asia NTU* 40

STANDARDS REQUIRED BY THE LAW, BY THE CODEX ENOLOGIQUE INTERNATIONAL AND BY WINY

	Food Chemical Codex	Specifications of WINY	Average values of WINY
Appearance	Crystalline Powder	Crystalline Powder	Crystalline Powder
Color	White	White	White
Odor	of SO ₂	of SO ₂	of SO ₂
Appearance of 20% solution	Clear	Clear	Clear
Content in K ₂ S ₂ O ₅	> 90%	> 97.2%	98.5%
Iron	< 10 mg/kg	< 5 mg/kg	0.2-1 mg/kg
Selenium	< 5 mg/kg	< 5 mg/kg	< 5 mg/kg
Lead	< 2 mg/kg	< 2 mg/kg	< 2 mg/kg
Copper	Not required	< 10 mg/kg	6 mg/kg
Chlorides	Not required	< 0.1%	
Sulfate	Not required	< 2.8%	1.4%
Thiosulfate (S ₂ O ₃)	< 0.1%	< 0.04%	< 0.04%